

VIII^{ème} journée de l'AFIIM



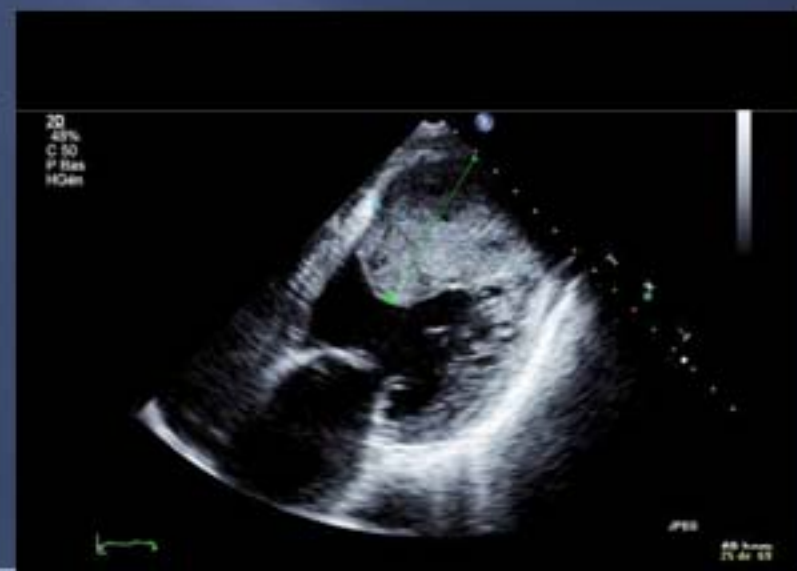
AFIIM Annual Meeting
Paris, March 2010

Samuel Haddad
JM Serfaty, JP Laissy
Hôpital Bichat
Paris

- ▣ Patient: 50 Years old man
- ▣ From Mali
- ▣ No medical history
- ▣ Symptoms
 - Dyspnea ++
 - Asthenia
 - Myalgia

TRANSTHORACIC ECHOCARDIOGRAPHY

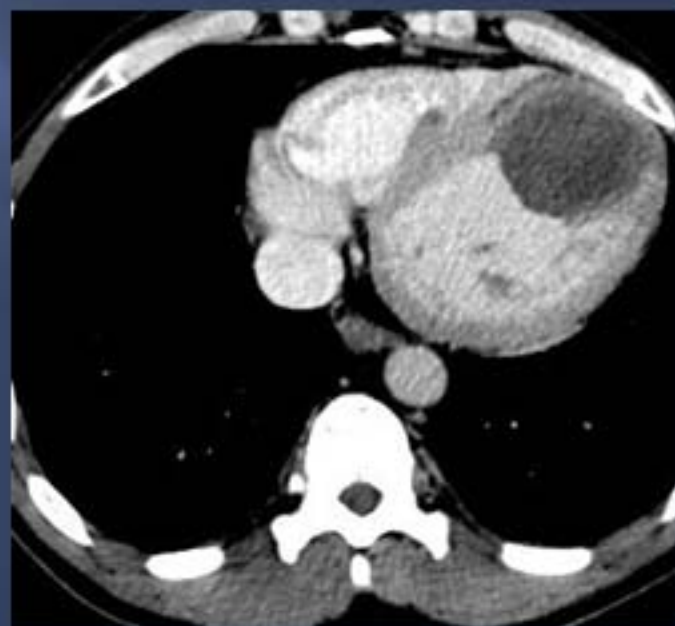
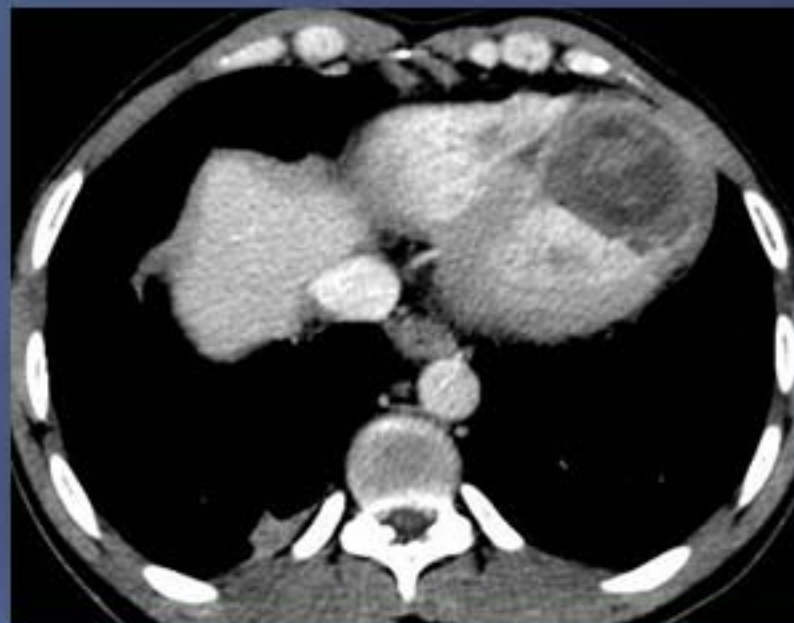
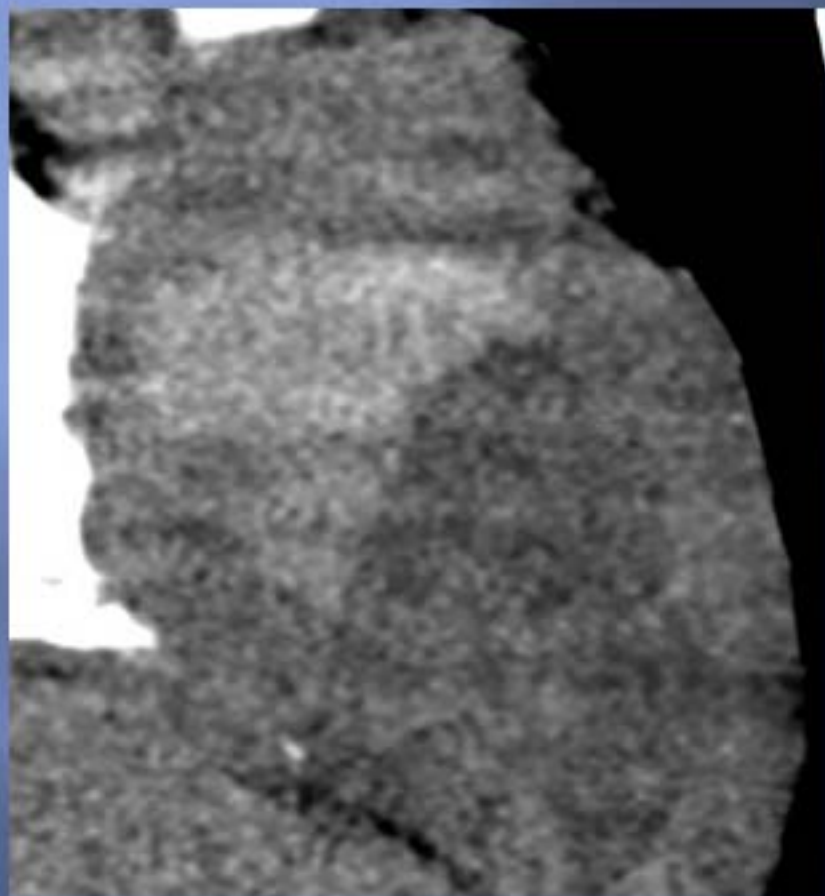
- Echogenic material in LV apex, 6 x7 cm
- Akinesy of the apex



Coronarography

- ▣ Normal coronary tree
- ▣ Angiographic ejection fraction : 44%
- ▣ Akinesy of the apex

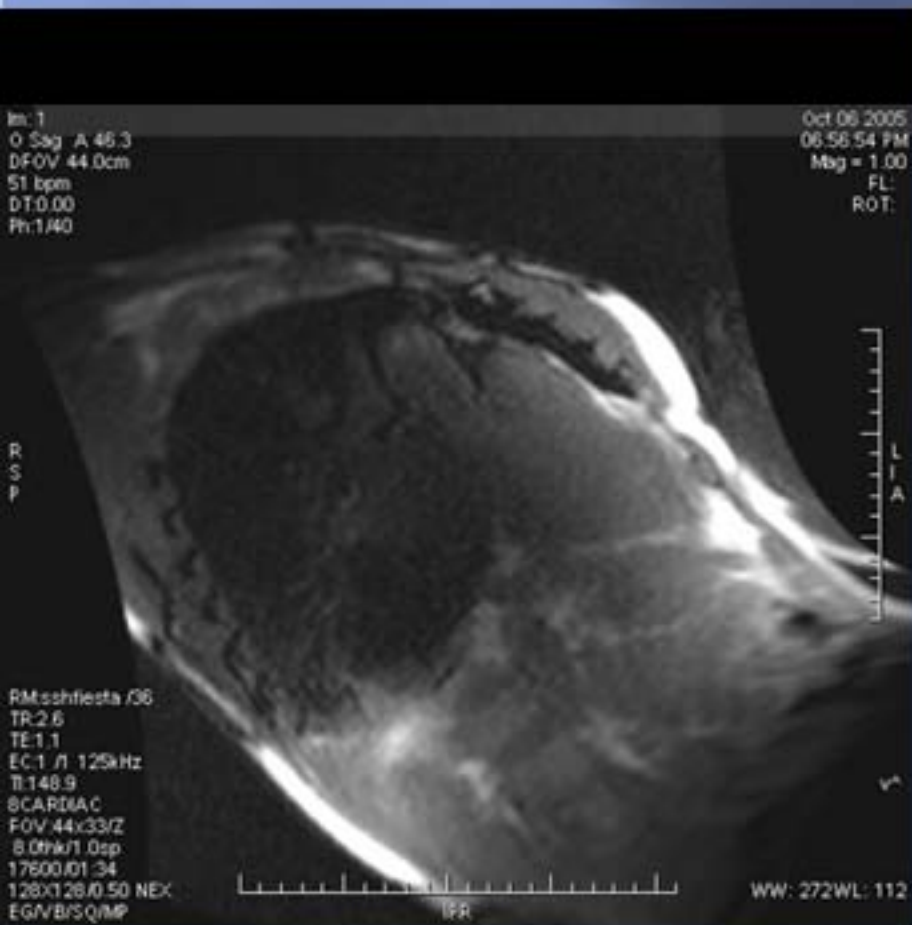
Chest CT

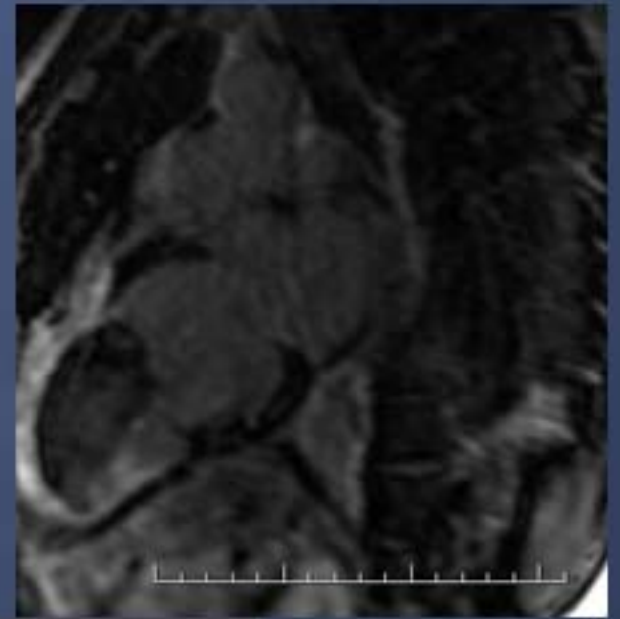
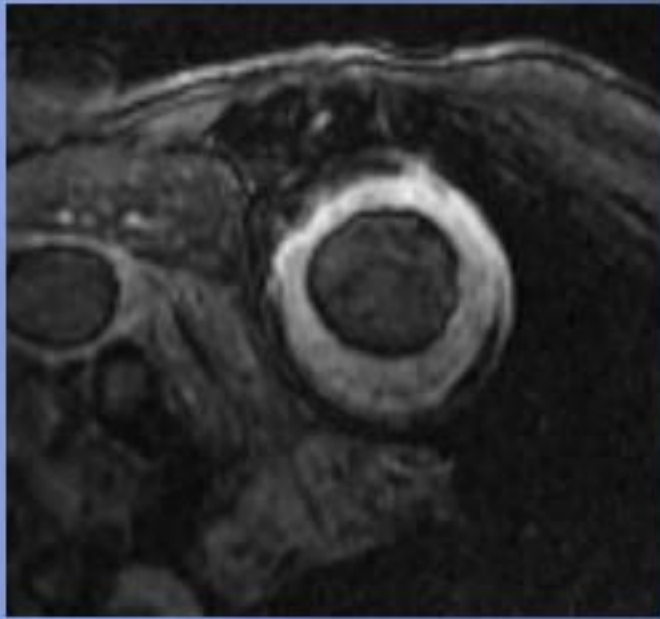


Hypothesis ?

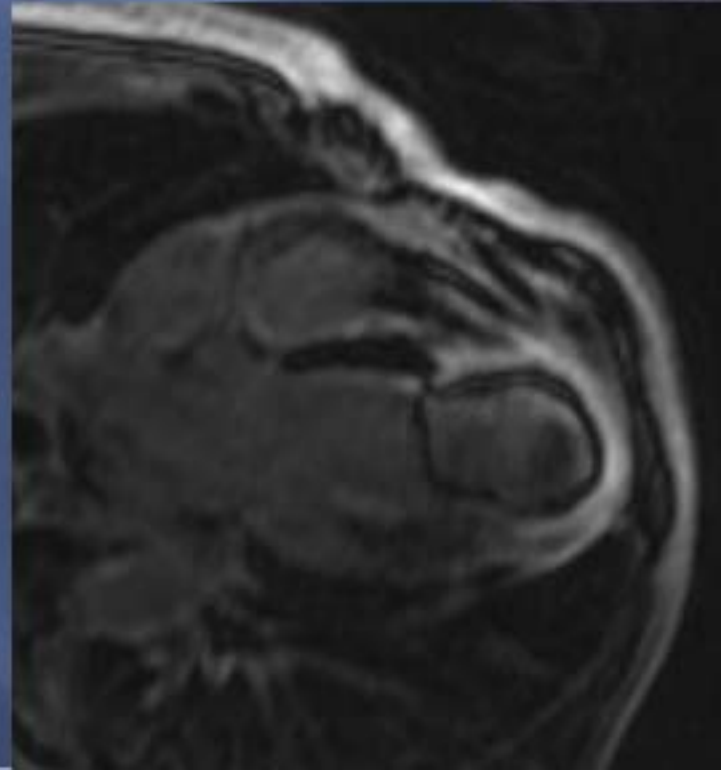
Next imaging modality ?

MRI

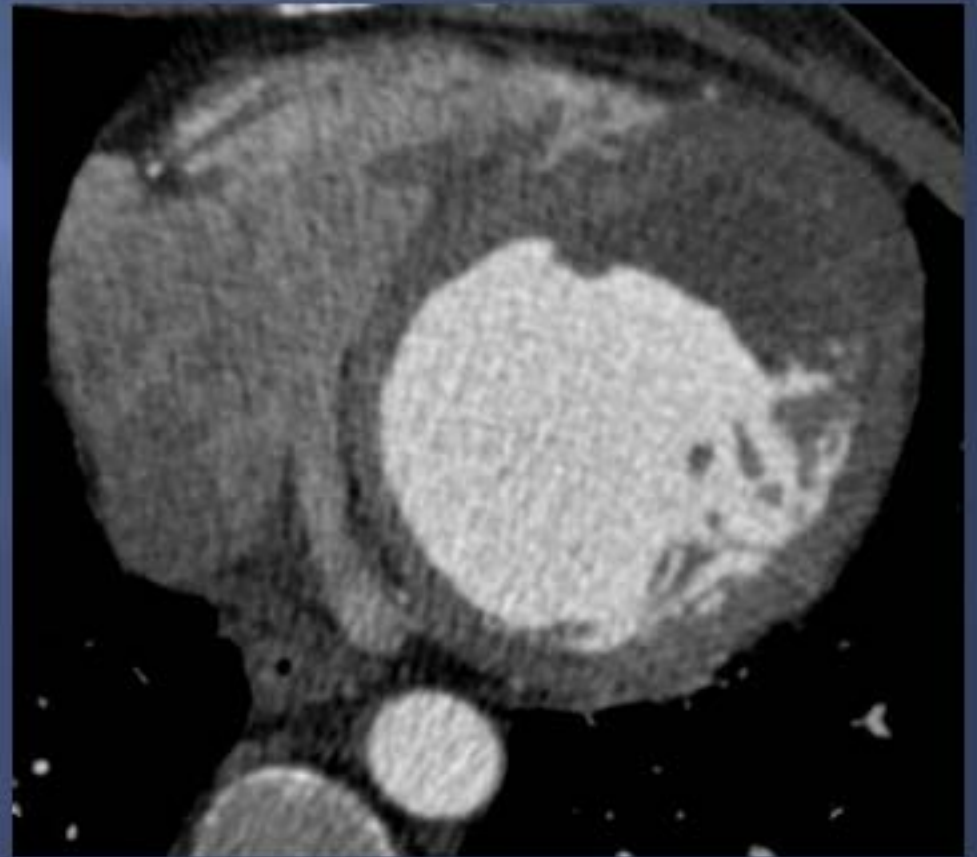
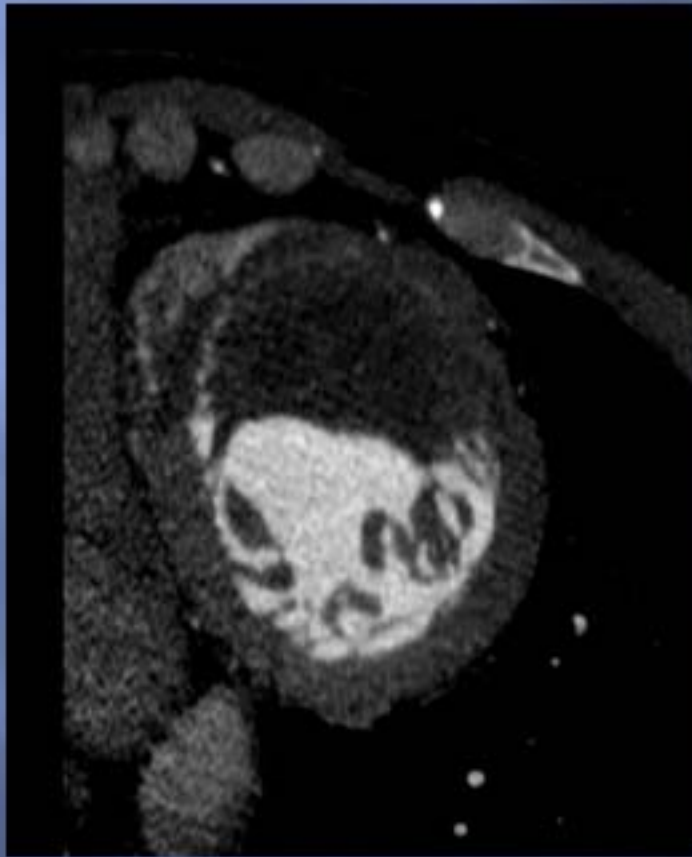


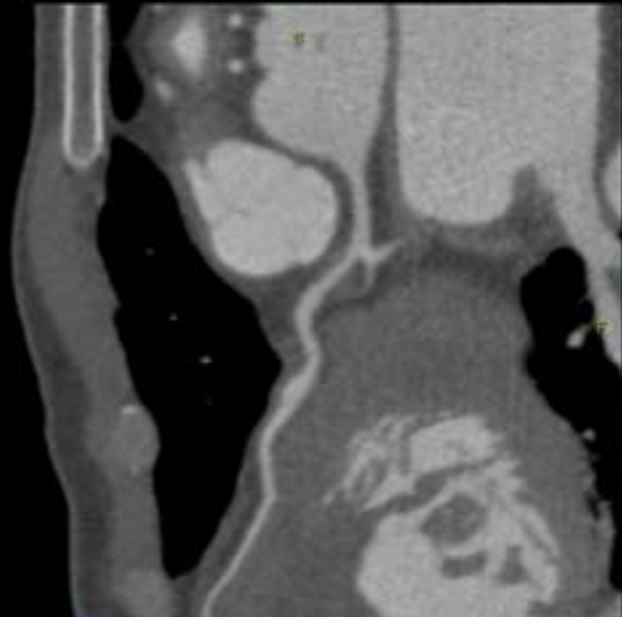


Delayed
enhancement



Cardiac CT





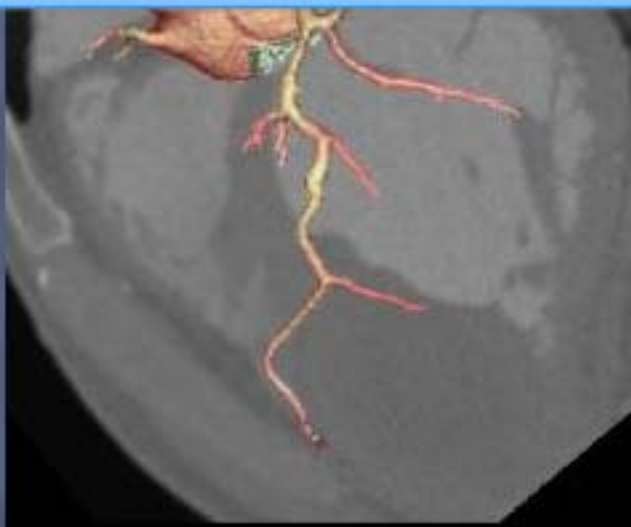
LAD



CX



- How do you associate all the signs ?



Potential causes of coronary artery dilatation

Atherosclerosis

Inflammatory disorders →

Fistula

Mycotic

Trauma/ Iatrogenic

Toxic

Kawasaki disease

Takayashu

SLE

Behçet

Wegener

Treatment and Follow-up

- ▣ Anti-coagulation.
- ▣ No surgery
- ▣ Others symptoms:
 - ▣ Uveitis
 - ▣ Deep vein thrombosis
 - ▣ Aphthosis

Behcet disease

3 years later...

